

PHASE  
gallery



**Ewa Słapa**

*Studies for Conditioned Thoughts*

Inaugural PHASE Gallery opening and reception

March 5, 2022 6pm-10pm

PHASE GALLERY

1718 Albion Street Los Angeles, CA 90031

[www.phasegallery.com](http://www.phasegallery.com)

## **Ewa Słapa *Studies for Conditioned Thoughts***

This new body of work draws its inspiration from the iconic “Gates of Hell”, Rodin’s decades long project, and expands through the studies of conditioning, habit, concept of free will, cognitive body, formation of self and identification, and others. In his initial approach, Rodin based his compositions of the gate panels on Dante’s scenes from Inferno, crowning them with the separated figure of Thinker. When the psyche is perceived as matter, the mind becomes an object that can be manipulated, shaped, and undergo semi-permanent transformations through imprints and reactionary forces. When the Thinker falls into Dante’s river, his body itself becomes the gate, as the mind reflects the psychologically disorienting effects of objecthood.

Ewa Słapa is a visual artist working in Sculpture and Photography. Her work entails various materials, techniques, and symbolic interactions, none of them taken for granted. Her projects, based on in-depth research, have addressed a range of subjects, drawing from fields of neuroscience, philosophy of mind, psychology of religion and others. Born in Poland, she lives and works in Los Angeles, CA.

Ewa Słapa “Studies for Conditioned Thoughts”

PHASE Gallery

March 05- 26, 2022

[www.ewaslapa.com](http://www.ewaslapa.com)





*Gate, 2022*

Rubber, Stainless Steel, 108 x 46 x 6 in







***Ultramarina, 2022***  
Acrylic Gypsum, Pigment, 26 x 4 x 3.5 in









***Screenscape 01, Screenscape 02, 2022***

Silkscreen Ink on Aluminum, 44 x 30 x 1 in



***Screenscape 01, 2022***  
Silkscreen ink on Aluminum Panel



**Screenscape 02, 2022**  
Silkscreen Ink on Aluminum Panel



**Synthetic Body, 2022**  
Paraffin Wax, Aluminum



***Synthetic Body 01, 2022***

Paraffin Wax, Aluminum, 38 x 20 x 6 in



***Synthetic Body 02, 2022***  
Paraffin Wax, Aluminum, 63 x 27 x 5 in



***Synthetic Body 03, 2022***  
Paraffin Wax, Aluminum, 30 x 15 x 6 in





***Synthetic Body 05, 2022***  
Paraffin Wax, Aluminum, 46 x 20 x 5 in



***Synthetic Body 04, 2022***  
Paraffin Wax, Aluminum, 48x 23x 5 in



***Neither Settler nor Native, 2021***  
Carved Stainless Steel, 90 x 72 x 69 in





***Neither Settler nor Native, 2021***  
Carved Stainless Steel, 90 x 72 x 69 in, detail



***Chubby Cubby 2022***

Aluminum, Salt, Resin, 72 x 18 x 15 in

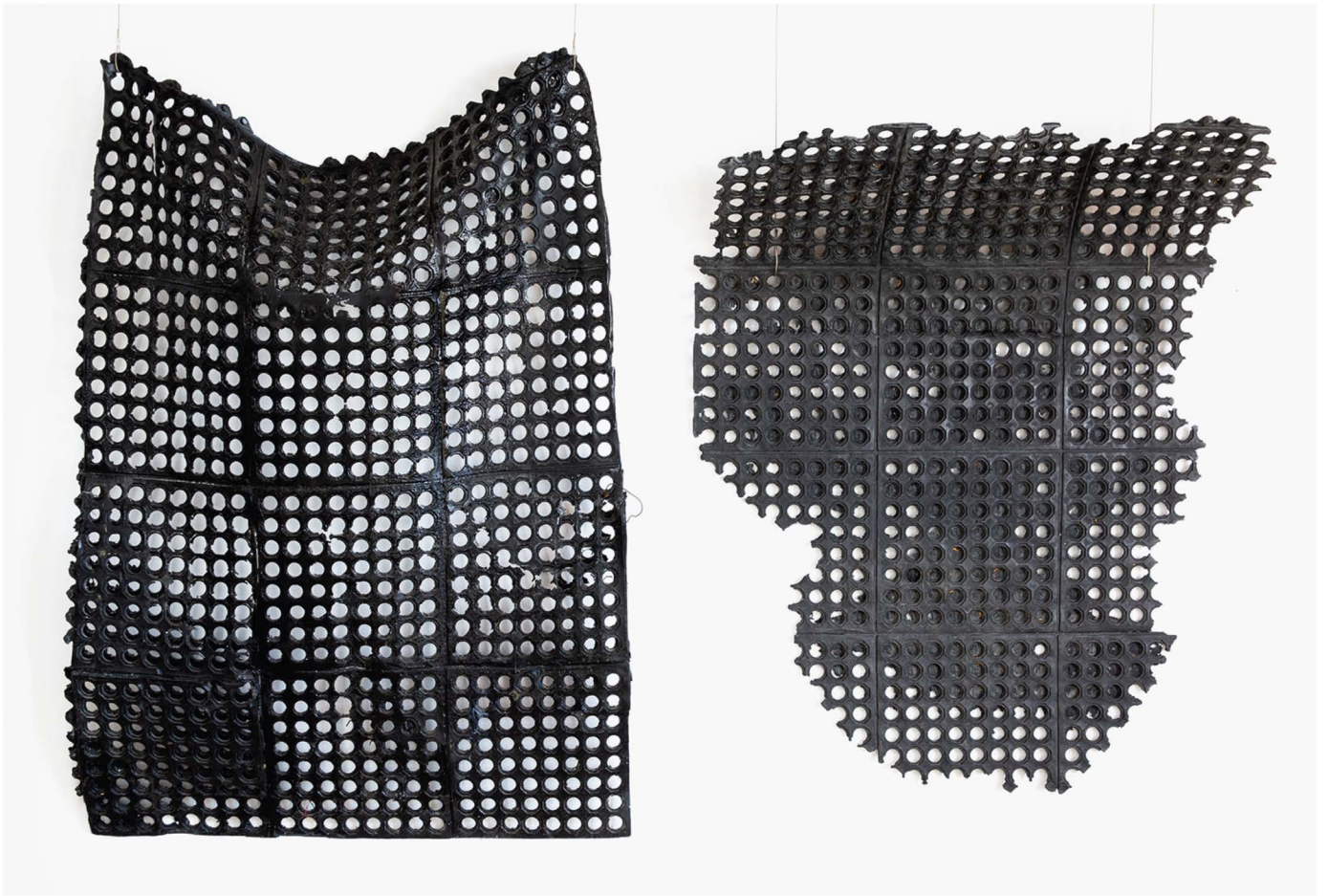






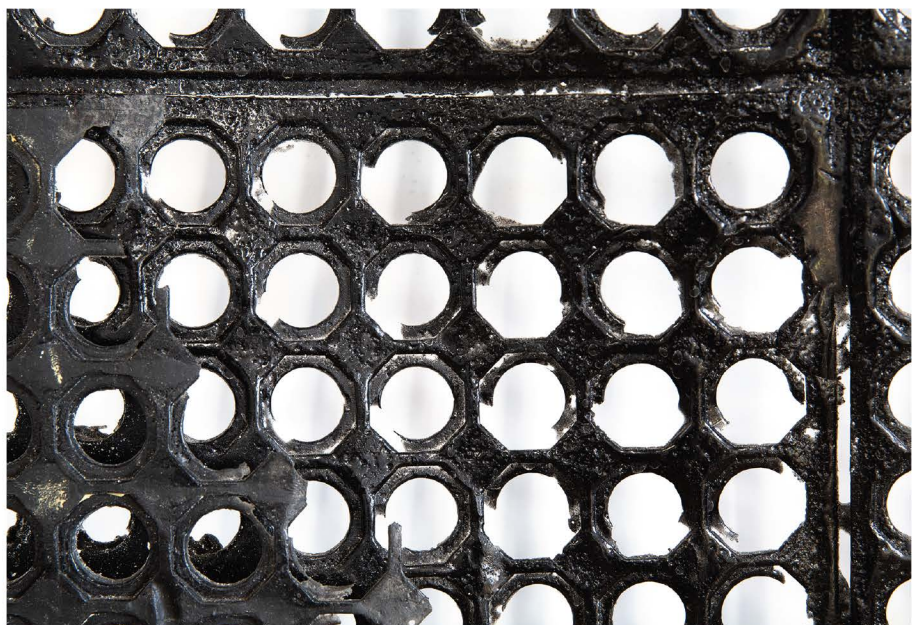


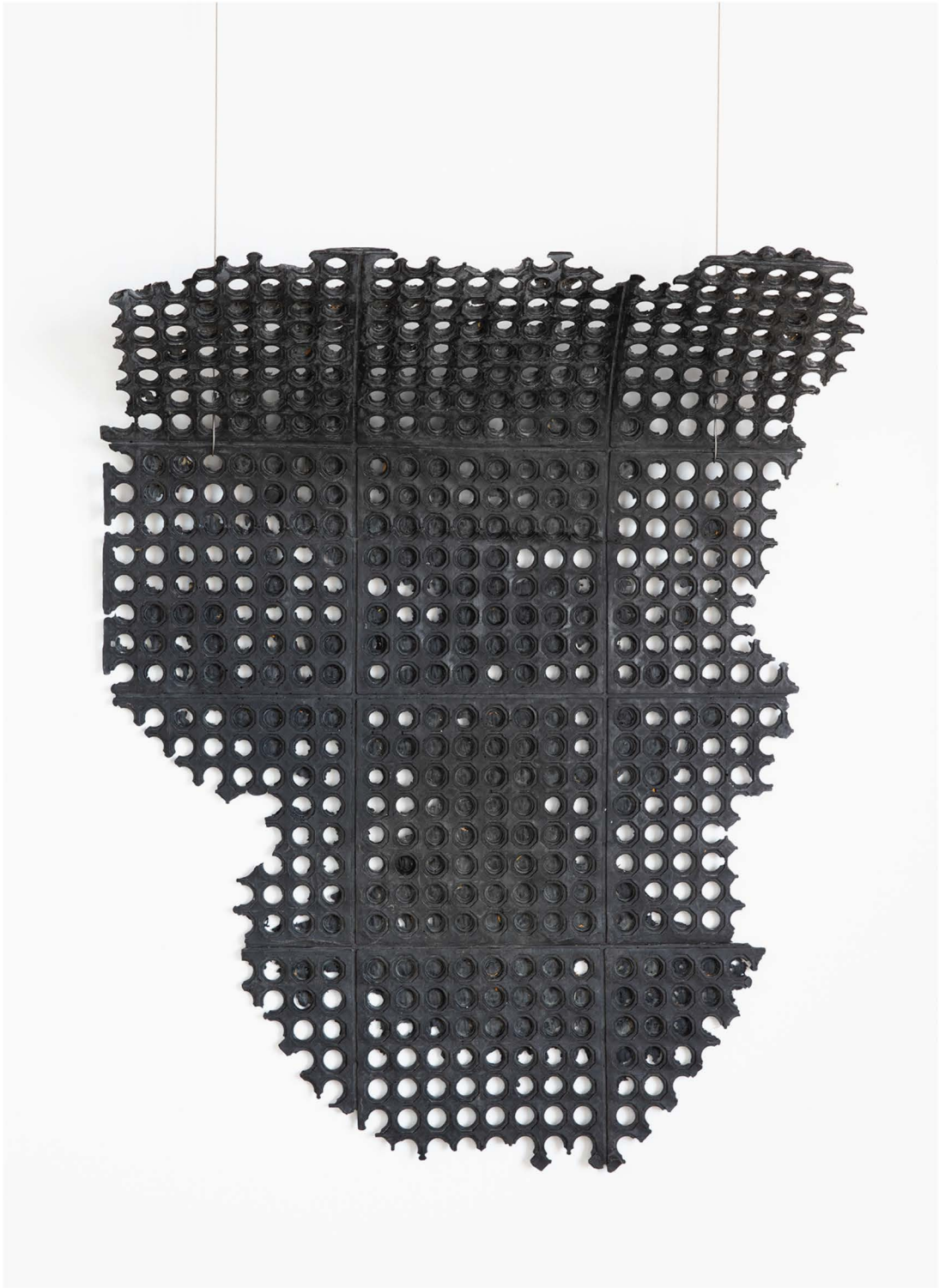
***On Borrowed Time, 2018***  
Coal Dust, Resin, 43 x 34 x 8 in



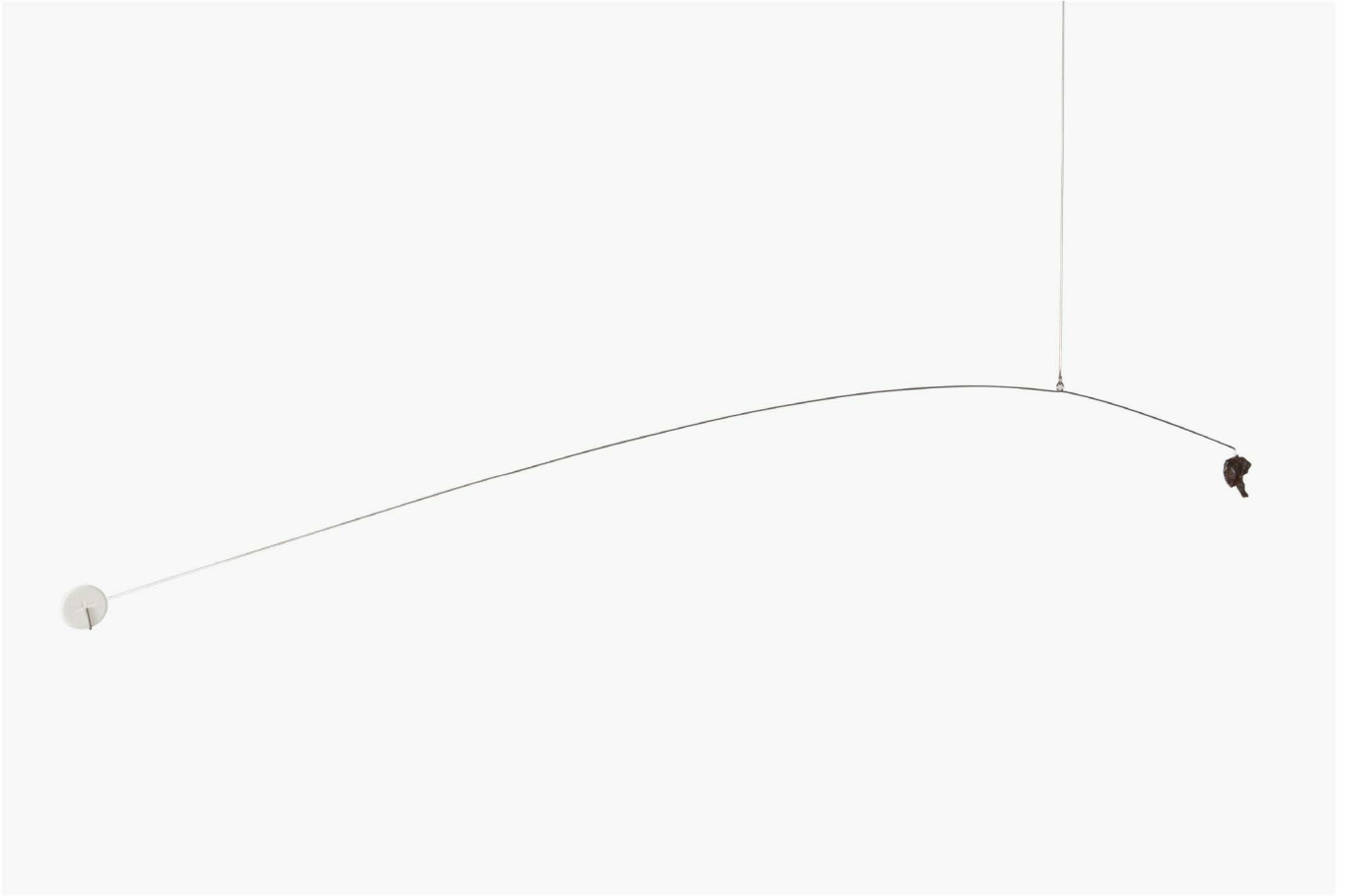
***On Borrowed Time, 2018***

Coal Dust, Resin





***On Borrowed Time, 2018***  
Coal Dust, Resin, 43 x 34 x 8 in



***Komunia, 2022***

Wafer, Meteorite, Stainless Steel, 4 x 44 in





***A Thorough Dig of the Whole Plot, 2021***

Alabaster, Stainless Steel, 48 x 34 in







***Emissaries, 2022***

Stainless Steel, Pewter, 62 x 21 x 9 in





***Secondhand Second Nature, 2022***

Stainless Steel, 62 x 21 x 9 in

